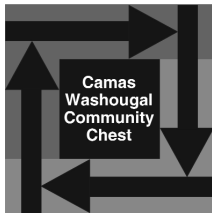


**Camas Washougal
Community Chest**

PO Box 960 Camas, WA 98607



Here is my Cash/check Pledge
for this amount: \$ _____

as a single donation

or a monthly donation

or

Contact me about workplace giving

Name (please print)

Employer/Company Name (if applicable)

Preferred Email Address

Mailing Address

City State Zip

X _____
Signature

----- Save this receipt for tax records -----

Received from:

To sponsor Camas Washougal
Community Chest in the amount of:

\$ _____ Cash/check

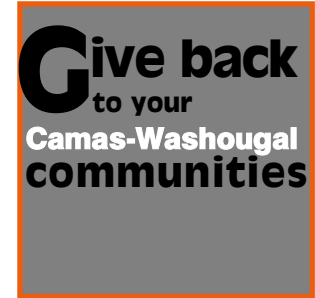
Date _____ Pledge

Camas Washougal Community Chest
is a 501(c)3 tax-exempt organization

WA State UBI 601856702
IRS EIN Tax ID no. 91-0839945

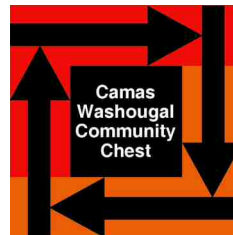
We gratefully acknowledge
these major donors:

- Georgia Pacific Mill and employees
- Katherine Sinclair Trust
- Hewlett-Packard Corporation and employees
- Camas School District employees
- Pendleton employees
- Exterior Wood Inc
- Management Engineering Associates
- Linear Technologies
- Underwriters Laboratories
- Waste Connections

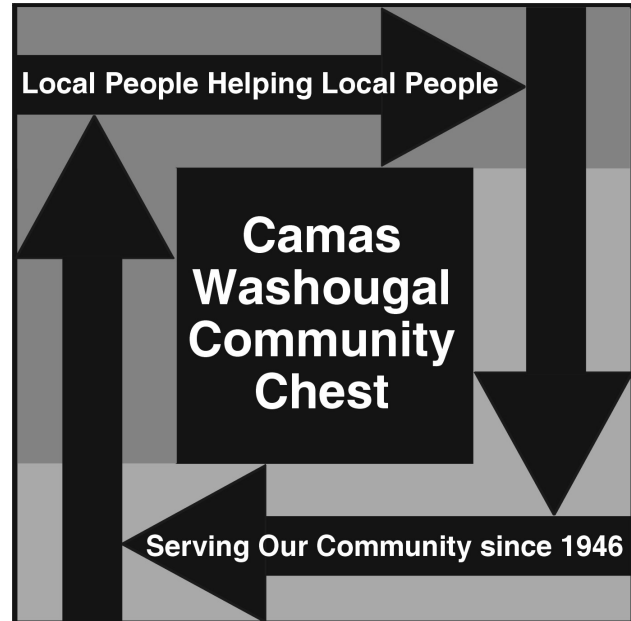


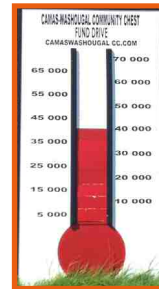
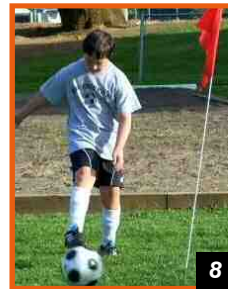
We need your help!

*Together we have the power
to improve our community.
The dollars raised will help support
non-profit programs serving residents
of Camas and Washougal.*



Serving our Community since 1946





95percent of contributions support local charities within our communities.

"I'm looking for an organization in my community that I can trust to make good use of my donations."

That's Camas Washougal Community Chest

Community Chest offers these giving options:

- **Workplace giving**—participate in your company's payroll deduction campaign. If you don't have one, we'll help you organize one today. A Community Chest campaign offers employees the opportunity to become knowledgeable about our communities' most critical needs, helping to make solutions possible.
- **Direct Contribution**—individuals can make a gift directly to the Community Chest campaign each year.
- **Cash or Securities**—gifts of appreciated securities may maximize your tax deduction by avoiding capital gains. We provide instructions for making a stock transfer.
- **Pledge Payments**—simply fill out this form and send your pledge in an envelope or submit your pledge for a payroll deduction to your employer's payroll department.

Let us help you make a contribution!

For information on any of these giving options, contact us

camaswashougalcommunitychest.org

Your donations to **Community Chest**

have supported local non-profits such as these:

Inter-Faith Treasure House (*photo 1*)

Meals on Wheels (*photo 3*)

Children's Home Society's East County Family Resource Center (*photo 7*)

Camas Sister City Organization

Camtown Youth Festival (*photo 6*)

Principals' Children's Fund and Suicide Prevention Program

Cub Scouts and Boy Scouts C-W activities (*photos 4 and 9*)

Lower Columbia Estuary Partnership C-W activities (*photos 2 and 5*)

Top Soccer Outreach Program (*photo 8*)

C-W Young Life

Janus Youth Programs

Swim lesson sponsorships for 60 local kids

Community Pregnancy Clinic

Camas Washougal **Community Chest**

PO Box 960
Camas, WA 98607

"I'm looking for ways to streamline my giving but still help my community."